

Wireline Digital Camera ⁽³⁶⁰⁾

Designed for Standard Wireline Winches to 2000m



TOOL

Diameter	43 mm (1.7 in)
Length (with probe top)	813 mm (32 in)
Weight	3.2 Kg (7.0 lbs)
Max Temp	0-70 °C (32-158 °F)
Max Pressure	200 bar (2900 PSI)

SENSOR

Resolution	1280 X 960
View Angle	180° / 360°
Frame Rate	15 FPS
Focal Length	25 mm - 500 mm (1 in - 19.7 in)

OPERATING CONDITIONS

Cable Type	Mono, Multi-Conductor, Coax
Logging Speed	Variable
Centralization	Required
Borehole Fluid	Dry or Clear Water



ALT headquarters

Z.A. Solupla
Rue de Niederpallen 30H
L-8506 Redange-sur- Attert
Luxembourg
T. +352 28 56 151

ALT Asia

36th Floor, Menara Maxis
Kuala Lumpur City Centre
50088 Kuala Lumpur
Malaysia
T. +60 3 2615 7261
info@alt.lu

www.alt.lu

More Information

For more specifications and information on the **Digital Wireline Camera 360 View** or other borehole equipment please contact **Mount Sopris Instruments**.

Example footage is available on request

Features subject to change



Mount Sopris Instrument Co.

4975 East 41st Avenue
Denver, Colorado 80216
USA
T. +(1) 303 279 3211
sales@mountsopris.com

www.mountsopris.com



www.mountsopris.com



www.alt.lu

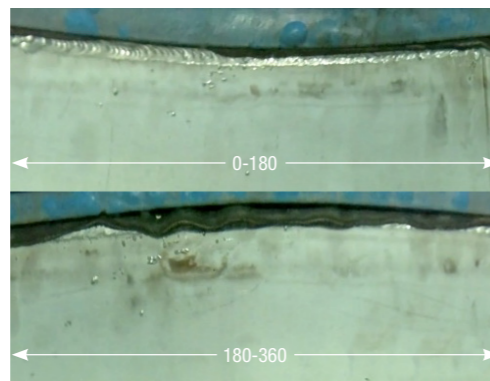
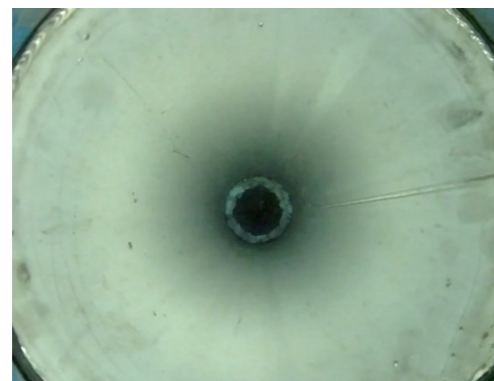
Designed for Standard Wireline Winches to 2000m

MSI Camera systems are designed to operate on standard coaxial, single, and multi-conductor wireline cable. Selectable encoder voltages and configurable depth factor makes interfacing to wireline winches of any make or model straightforward. **Depth and speed** are overlaid onto video as subtitles. You can **show or hide** them as you please even during playback.



Downhole Footage Sidewall Footage At the Same Time

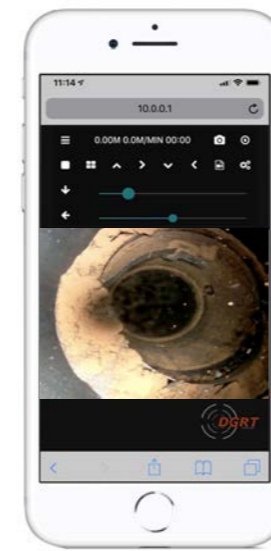
With advanced video processing techniques, **front facing** and **full 360 degree side view** footage is **recorded simultaneously**. Capture the entire hole in a single pass and perform a comprehensive review of the entire hole afterwards.



On Board Recording Live Preview Live Snapshots Adjustable Lighting

High resolution video is recorded on board the camera while the operator can choose a video stream to **monitor the video in real-time**. See something you like down hole? The built in snapshot feature downloads high resolution **still images** straight to your device for **immediate review**.

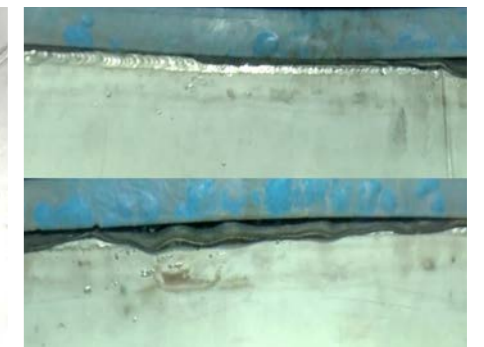
No Special Software, Easy to Operate Built in Wi-Fi, Any Device



Camera control is performed from the web browser of a supported **device of your choice**. Playback of recording is via the web browser or supported video player of your choice.

Multiple operators can wirelessly view the Preview video feed on **tablets, smartphones or computers**.

No crowding around a small, hard to see screen like other borehole camera systems.



Applications

- Pump inspection
- Casing inspection
- Pylon inspection
- Tunnel inspection
- Shaft inspection
- Strata identification
- Equipment recovery
- Low latency steering
- 4G remote monitoring

Ordering Information

Model MSICAM360

Includes:

- Digital Wireline Camera 360 View
- Digital Wireline Camera Surface unit
- Transit case
- Ancillary cabling
- Centralizers

Optional:

- Smart device or laptop for viewing

