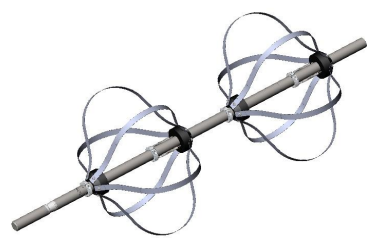


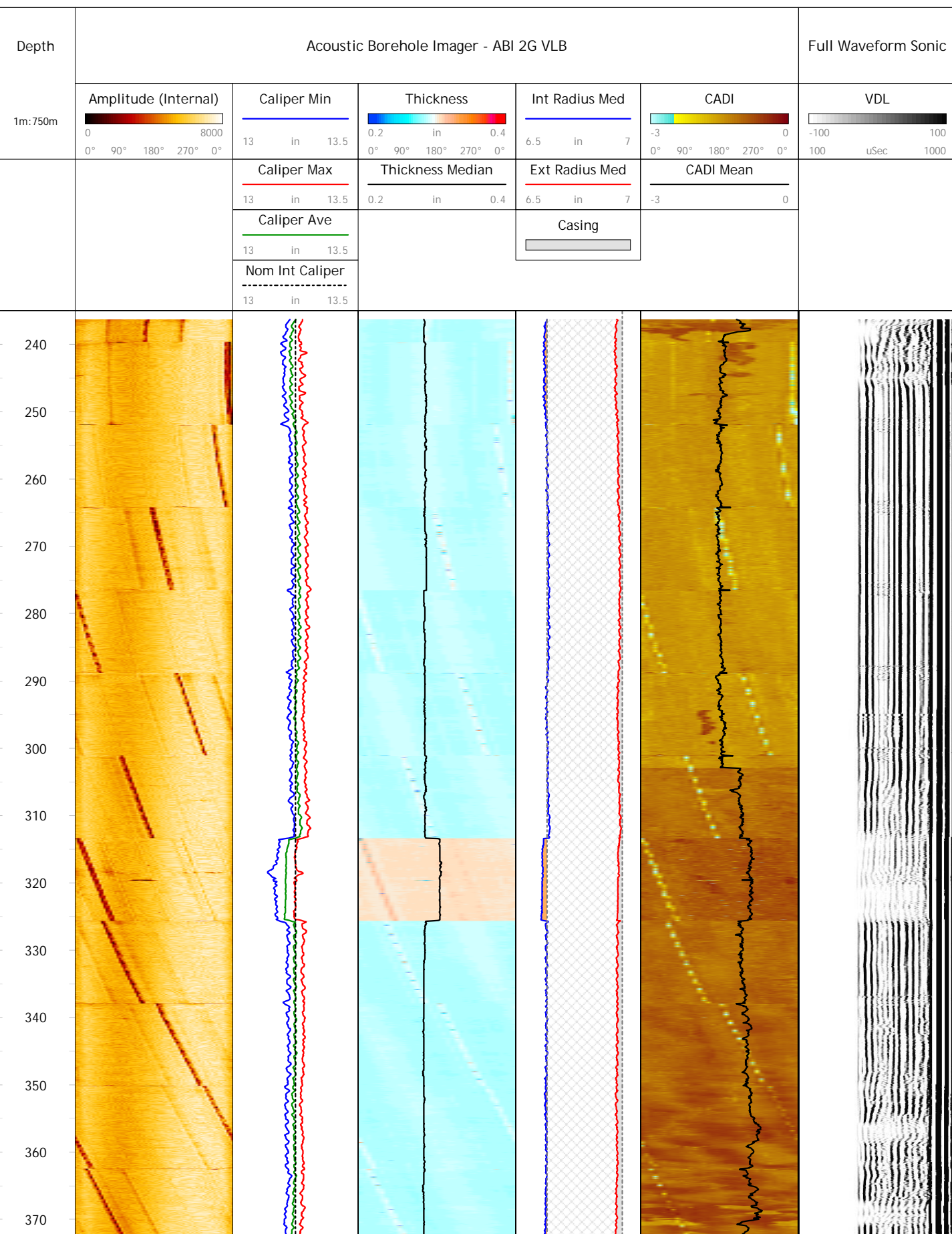
The design of the QL40-ABI2G-VLB (Very Large Borehole) is based on the successful and well known QL40-ABI2G tool. It has specially been designed to assess the integrity of large diameter cased holes - up to 30". The hardware/firmware innovations implemented in this tool offers new real time processing options for the computation of casing thickness and a qualitative cement bond index (CADI). The CADI - Casing Amplitude Decay Index - is displayed as a 360° unwrapped image providing a high resolution image of the cement distribution around the entire casing circumference. Additionally up to 36 full waveforms of the echo can be recorded per scan circle to allow detailed postprocessing of the reflection pattern.

Specifications

Diameter:	40mm (1.6")	Sensor:	Fixed 1.2 MHz transducer, rotating and focusing mirror.
Length:	1.62m (63")	Meas. range:	250mm - 760mm (10"-30")
Weight:	6.7kg (14.7lbs)	Azi. res.:	72, 144, 216, 288pts
Temperat. (max):	70°C (158°F)	Caliper res.:	0.16mm
Pressure (max):	200bar (2900psi)	Compatibility:	OPAL, SCOUT, MATRIX
Azi. accuracy:	+/- 1.2°		
Tilt accuracy:	+/- 0.5°		



ABI 2G VLB Casing Thickness Application



ABI 2G VLB Cement Evaluation Application

