



# LoggerSuite

*Version 11.0*

## Software Installation Guide

**Advanced Logic Technology sa**

Bat A, Route de Niederpallen  
L-8506 Redange-sur-Attert  
Luxembourg

Phone : +352 23 649 289  
Fax : +352 23 649 364  
Email : support@alt.lu  
Web : www.alt.lu

**Mount Sopris Instruments Co., Inc.**

4975 E. 41st Ave.  
Denver, CO 80216  
USA

Phone : +1 303 279 3211  
Fax : +1 303 279 2730  
Email : tech.support@mountsopris.com  
Web : www.mountsopris.com

## BEFORE YOU INSTALL

**LoggerSuite** is a single installation package for surface acquisition systems software.

**!** Before following the installation instructions below ensure that the logger unit is **NOT** connected to your computer.

Your hardware should also comply with the following requirements for version 10.5 of the logger software.

**Logger** minimum firmware versions:

	System controller	Modem controller	PSU controller
Matrix	112	115	100
Bbox/ALTLogger Jazz	106	-	-
Abox/ALTLogger USB Plugin	-	-	-

**WellCAD** minimum version:

4.3 build 2319

MS Windows **Operating Systems:**

<b>Matrix</b>	<i>XP, Vista, Win7</i>	<i>32 and 64 bit</i>
Bbox/ALTLogger Jazz	<i>XP, Vista, Win7</i>	<i>32 and 64 bit</i>
Abox/ALTLogger USB Plugin	<i>XP, Vista, Win7</i>	<i>32 bit</i>

# SOFTWARE INSTALLATION

1. Insert the Software Installation CD-ROM into the CD drive of your computer. If Windows does not run the CD-ROM automatically browse the contents of your CD and start the **Setup.exe** manually.

2. The installation wizard shows the software version (**Figure 1**) and displays the license agreement first (**Figure 2**). After reading the agreement click on **Yes** to continue the installation.

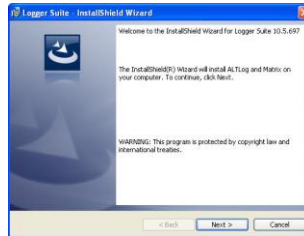


Figure 1



Figure 2

3. Choose the destination directory. The default installation folder is **C:\Logger** (**Figure 3**). To confirm your choice and proceed click on **Next**.



Figure 3

4. A dialog box showing all installation options you selected so far will be displayed (**Figure 4**). Click **Install** to proceed with the installation.

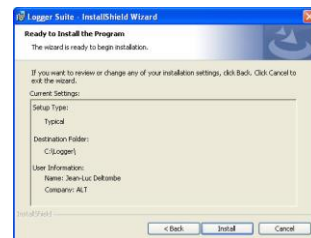


Figure 4

5. The product is being installed. If you are upgrading from older versions all tool configuration files and headers will be moved to the new destination folders. If you wish to install additional configuration files you may do so using the **LoggerSettings** application which is part of the **LOGGER Suite**. The **LoggerSettings** application can be started at the end of this installation process.

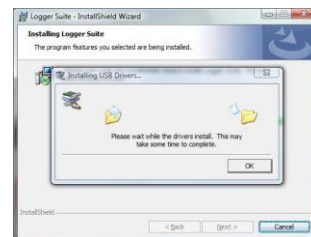


Figure 5

6. The USB drivers are installed at the end of the procedure (**Figure 5**). Depending on the MS Windows operating system in use (Win7, Vista or XP) the USB installer may ask you to confirm the installation.

On **Vista (32 bit)** the message as shown in **Figure 6** may appear for each of the driver files. Select the option **Install this driver software anyway** to proceed with its installation.



Figure 6

On **Win7 (64 bit)** the message as shown in **Figure 7** may appear for each of the driver files. Select the option **Install** to proceed with its installation.



Figure 7

Upon successful installation of the USB drivers the message box shown in **Figure 8** will be displayed. Click on **OK** to proceed with the installation.



Figure 8

If the installation process fails, check that you are allowed to install unsigned drivers. It may also be necessary to install the USB drivers manually (see **Notes On USB Driver Installation**).

7. At the end of the installation process the InstallShield Wizard will display a message box (**Figure 9**). By clicking on **Finish** you will launch the LoggerSettings application. This software application allows configuration of the logger itself (depth encoder, tension gauge,...) and should be used to install any additional tool configuration files (sub, stack, tol,... files). Please refer to the LoggerSettings guide for more details.

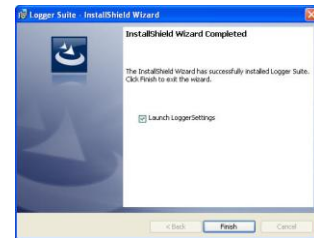


Figure 9

8. You can now connect the logger to your computer, turn the device on and start the Logger software on your computer. Refer to the Notes On USB Driver Installation if your operating system requires more installation steps.

# NOTES ON USB DRIVER INSTALLATION

The first time the logger is connected to the computer, Windows will automatically detect the hardware and will install the associated drivers. However, on **Windows XP**, you may be asked to complete the installation.

**NOTE:** The USB drivers are located in the ...\\Drivers\\x86 (32 bits) and ...\\Drivers\\x64 (64 bits) subfolders of the application's installation directory.

## USB-Plugin / Abox hardware

1. Two drivers should be installed for these loggers. When your computer has detected the new hardware it will display the Found New Hardware Wizard window (**Figure 10**). Select the third option and click on **Next** to start the driver search and installation process
2. Select the first option and click on **Next** (**Figure 11**). The system may ask you to confirm the installation of the driver (**Figure 12**). Select **Continue Anyway**.

In case you have to manually install the USB drivers select the second option and point to the subfolders indicated in the Note above.

3. Click on **Finish** (**Figure 13**) and the Hardware Wizard will restart and search for the USB-ALTLogger controller driver. Repeat the previous steps to install this driver.

4. After the installation of the USB ALTLogger – controller device is complete close the Hardware Wizard by clicking on **Finish** (**Figure 14**). The Logger software can now be started with a double click on the Logger icon that has been placed on your desktop.



Figure 10



Figure 11



Figure 12



Figure 13



Figure 14

## Jazz hardware

1. When your computer has detected the new hardware it will display the Found New Hardware Wizard window (**Figure 10**). Select the third option and click on **Next** to start the driver search and installation process
2. Select the first option and click on **Next** (**Figure 11**). The system may ask you to confirm the installation of the driver (**Figure 12**). Select **Continue Anyway**.

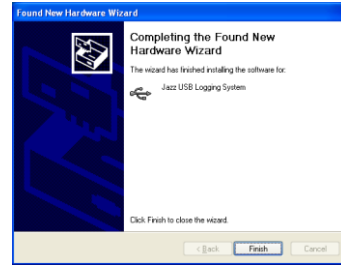


Figure 15

In case you have to manually install the USB drivers select the second option and point to the subfolders indicated in the Note above.

3. After the installation of the Jazz USB Logging System is complete close the Hardware Wizard by clicking on **Finish** (**Figure 15**). The Logger software can now be started with a double click on the Logger icon that has been placed on your desktop.

## Matrix hardware

1. When your computer has detected the new hardware it will display the Found New Hardware Wizard window (**Figure 10**). Select the third option and click on **Next** to start the driver search and installation process
2. Select the first option and click on **Next** (**Figure 11**). The system may ask you to confirm the installation of the driver (**Figure 12**). Select **Continue Anyway**.



Figure 16

In case you have to manually install the USB drivers select the second option and point to the subfolders indicated in the Note above.

3. After the installation of the Matrix USB Logging System is complete close the Hardware Wizard by clicking on **Finish** (**Figure 16**). The Logger software can now be started with a double click on the Logger icon that has been placed on your desktop.